



|  |   |   |                             |
|--|---|---|-----------------------------|
| <b>Prüfbericht - Nr.:</b> 0114030352j7 001   |   | <b>Seite 1 von 5</b>  |                             |
| <i>Test Report No.:</i>  |   | <i>Page 1 of 5</i>  |                             |
| <b>Auftraggeber:</b><br><i>Client:</i>   | Chi Mei Corporation<br>59-1, San Chia, Jen Te, Tainan City 71702, Taiwan, R.O.C.  |   |                             |
| <b>Gegenstand der Prüfung:</b><br><i>Test Item:</i>  | STYRENE HOMOPOLYMER   |   |                             |
| <b>Bezeichnung:</b><br><i>Identification:</i>  | POLYREX® PG-33 / Nature   |   |                             |
| <b>Anlieferungszustand:</b><br><i>Delivery condition:</i>  | apparent good   | <b>Eingangsdatum:</b><br><i>Date of Receipt:</i>                                      | 2014-12-16                  |
| <b>Prüfart:</b><br><i>Testing location:</i>  | TÜV Rheinland (Shanghai) Co., Ltd.  |   |                             |
| <b>Prüfgrundlage:</b><br><i>Test specification:</i>  | According to RoHS (recast): Restriction of the Use of Certain Hazardous Substances in Electrical and Electronic Equipment, 2011/65/EU: Total Content of Lead, Cadmium, Mercury, Chromium VI, Polybrominated Biphenyls, Polybrominated Diphenyl Ethers |   |                             |
| <b>Prüfergebnis:</b><br><i>Test result:</i>  | According to the kind and extend of tests performed the above mentioned test item passed the test specification.  |   |                             |
| <b>geprüft/ tested by:</b>   |   | <b>kontrolliert/ checked by:</b>  |                             |
|   |   |  |                             |
| 2015-01-05 Anne Chen<br>/Coordinator   |   | 2015-01-05 Carl Chang<br>/Department Manager  |                             |
| <b>Datum</b><br><i>Date</i>  | <b>Name/Stellung</b><br><i>Name/Position</i>  | <b>Unterschrift</b><br><i>Signature</i>   | <b>Datum</b><br><i>Date</i> |
|  |   |   |                             |
| <b>Sonstiges/ Other Aspects:</b>   |   |   |                             |
| Test period: 2014-12-16 – 2015-01-05   |   |   |                             |
| <b>Abkürzungen:</b>  |   | <b>Abbreviations:</b>   |                             |
| ok / P = entspricht Prüfgrundlage  |   | ok / P = passed   |                             |
| fail / F = entspricht nicht Prüfgrundlage  |   | fail / F = failed   |                             |
| n.a. / N = nicht anwendbar   |   | n.a. / N = not applicable   |                             |
| <p><b>Dieser Prüfbericht bezieht sich nur auf das o.g. Prüfmuster und darf ohne Genehmigung der Prüfstelle nicht auszugsweise vervielfältigt werden. Dieser Bericht berechtigt nicht zur Verwendung eines Prüfzeichens.</b></p> <p><i>This test report relates to the a. m. test sample. Without permission of the test center this test report is not permitted to be duplicated in extracts. This test report does not entitle to carry any safety mark on this or similar products.</i></p> |   |   |                             |



Test Report No. : 0114030352j7 001  
 Customer : Chi Mei Corporation  
 Test Method : Cd, Pb, Hg – determination with reference to IEC62321: 2013  
 Cr VI, PBB/PBDE – determination with reference to IEC62321: 2008

2015-01-05

| Sample Material Lab.-No.                             |       | MDL | POLYREX® PG-33 plastic / transparent TCL141216-98 |
|--|-------|-----|---|
| Cadmium (Cd)   | mg/kg | 2   | n.d.  |
| Lead (Pb)  | mg/kg | 2   | n.d.  |
| Mercury (Hg)   | mg/kg | 2   | n.d.  |
| Chromium VI (Cr VI)                                  | mg/kg | 2   | n.d.  |
| <b>Sum of Polybrominated biphenyls (PBBs)</b>        | mg/kg | -   | n.d.  |
| Monobromobiphenyl                                    | mg/kg | 5   | n.d.  |
| Dibromobiphenyl                                      | mg/kg | 5   | n.d.  |
| Tribromobiphenyl                                     | mg/kg | 5   | n.d.  |
| Tetrabromobiphenyl                                   | mg/kg | 5   | n.d.  |
| Pentabromobiphenyl                                   | mg/kg | 5   | n.d.  |
| Hexabromobiphenyl                                    | mg/kg | 5   | n.d.  |
| Heptabromobiphenyl                                   | mg/kg | 5   | n.d.  |
| Octabromobiphenyl                                    | mg/kg | 5   | n.d.  |
| Nonabromobiphenyl                                    | mg/kg | 5   | n.d.  |
| Decabromobiphenyl                                    | mg/kg | 5   | n.d.  |
| <b>Sum of Polybrominated diphenyl ethers (PBDEs)</b> | mg/kg | -   | n.d.  |
| Monobromodiphenyl ether                              | mg/kg | 5   | n.d.  |
| Dibromodiphenyl ether                                | mg/kg | 5   | n.d.  |
| Tribromodiphenyl ether                               | mg/kg | 5   | n.d.  |
| Tetrabromodiphenyl ether                             | mg/kg | 5   | n.d.  |
| Pentabromodiphenyl ether                             | mg/kg | 5   | n.d.  |
| Hexabromodiphenyl ether                              | mg/kg | 5   | n.d.  |
| Heptabromodiphenyl ether                             | mg/kg | 5   | n.d.  |
| Octabromodiphenyl ether                              | mg/kg | 5   | n.d.  |
| Nonabromodiphenyl ether                              | mg/kg | 5   | n.d.  |
| Decabromodiphenyl ether                              | mg/kg | 5   | n.d.  |

**Notes:**

- n.d. - not detected
- n.a. - not applicable
- MDL - Method of Detection Limit
- mg/kg is equal to ppm (parts per million)

|   | Cd  | Cr(VI) | Pb   | Hg   | PBBs | PBDEs |
|---|-----|--------|------|------|------|-------|
| <b>Maximum permissible Limit acc. to 2011/65/EU (mg/kg)</b> | 100 | 1000   | 1000 | 1000 | 1000 | 1000  |



Test Report No. : 0114030352j7 001  
Customer : Chi Mei Corporation

2015-01-05

**Test Sample**

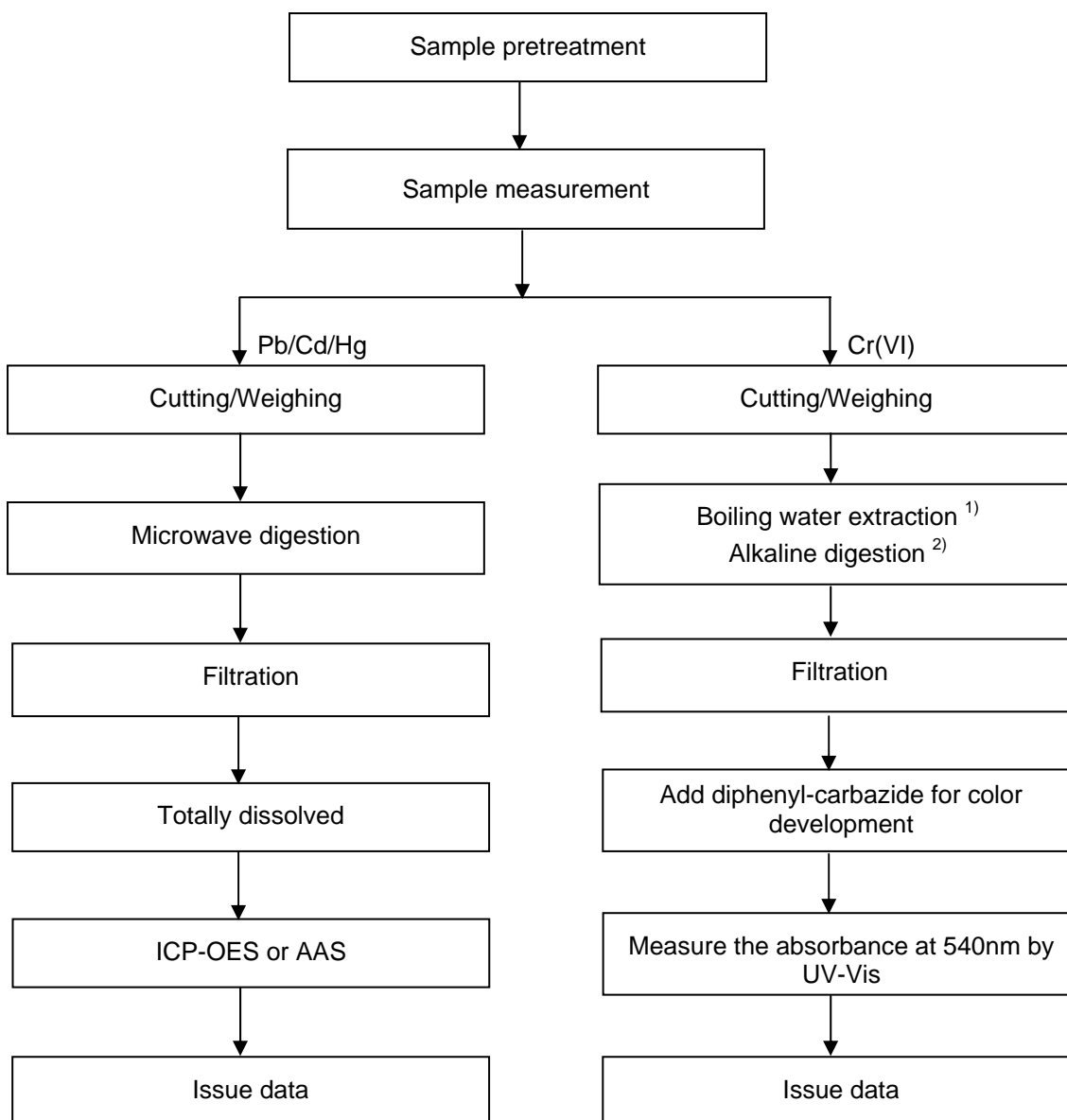


Test Report No. : 0114030352j7 001  
Customer : Chi Mei Corporation

2015-01-05

**Testing procedure:**

RoHS (Pb, Cd, Hg, Cr(VI))



Notes: <sup>1)</sup> For metallic material  
<sup>2)</sup> For non-metallic material

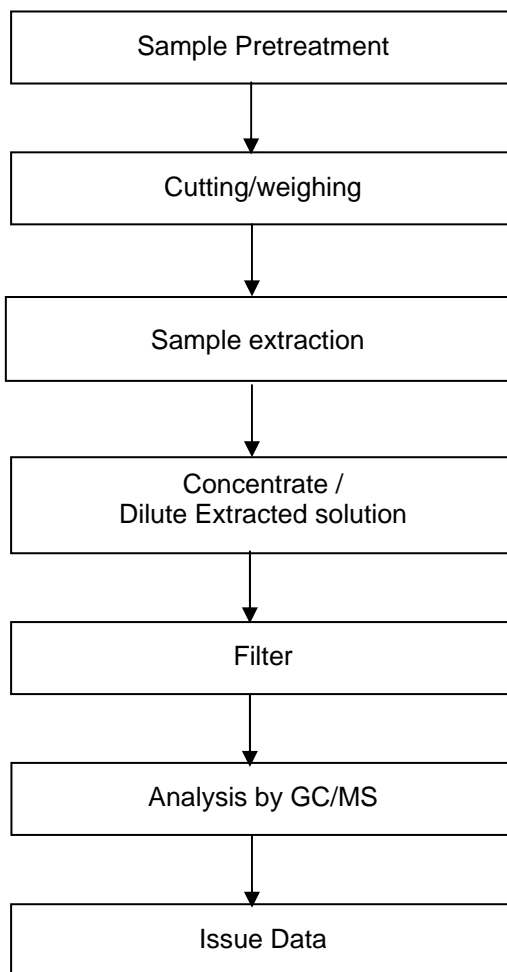


Test Report No. : 0114030352j7 001  
Customer : Chi Mei Corporation

2015-01-05

**Testing procedure:**

RoHS (PBBs/PBDEs)



--- End of Test-Report ---

